

## **AUTOMATIC BAND SAW EB-330FAS**

Order Code: (B080)

Edition : 2.0  
Date: (05/24)

The following section covers the spare parts diagrams and lists that were current at the time this manual was originally printed. Due to continuous improvements of the machine, changes may be made at anytime without notification.

### **HOW TO ORDER SPARE PARTS**

1. Have your machines model number, serial number & date of manufacture on hand, these can be found on the specification plate mounted on the machine
2. A scanned copy of your parts list/diagram with required spare part/s identified.

### **NOTE: SOME PARTS MAY ONLY BE AVAILABLE AS AN ASSEMBLY**

3. Go to [www.machineryhouse.com.au/contactus](http://www.machineryhouse.com.au/contactus) and fill out the inquiry form attaching a copy of scanned parts list.



### **WARNING!**

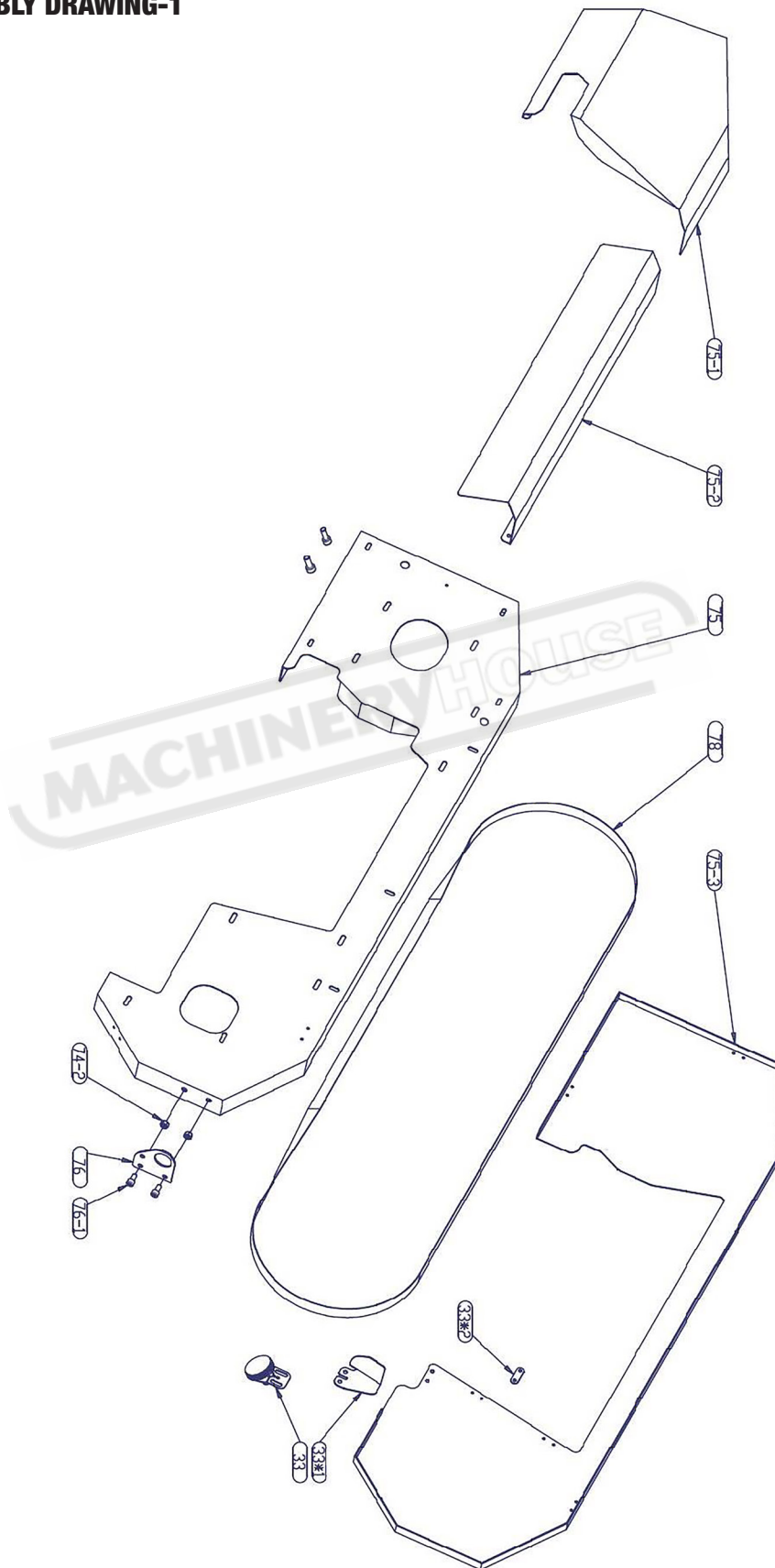
*Electricity is dangerous and could cause death  
All electrical work must be carried out by a qualified electrician.*



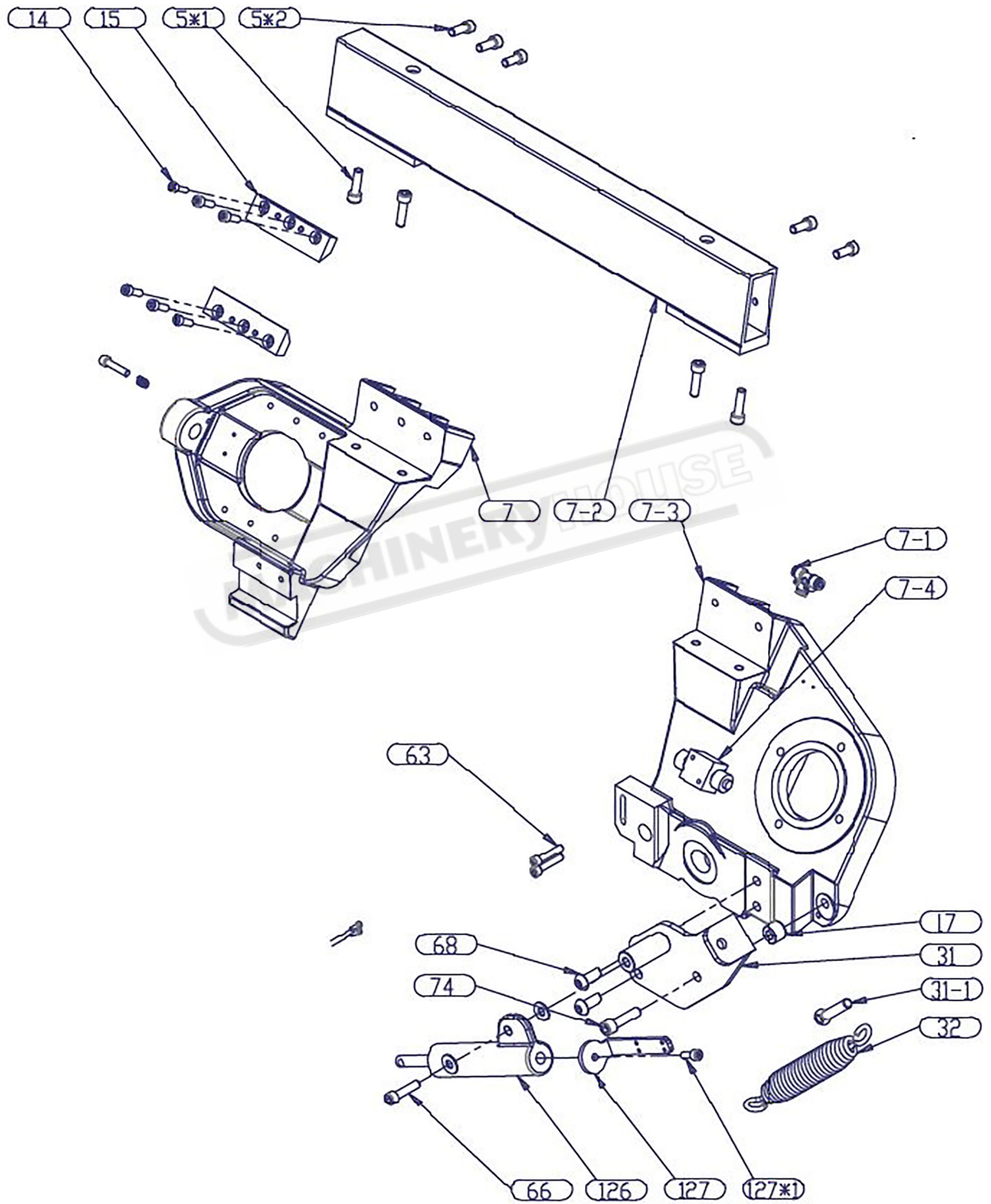
### **CAUTION**

*It is impossible to cover all possible hazards Every workshop environment is different. These are designed as a guide to be used to compliment training and as a reminder to users prior to equipment use. Always consider safety first, as it applies to the individual working conditions.*

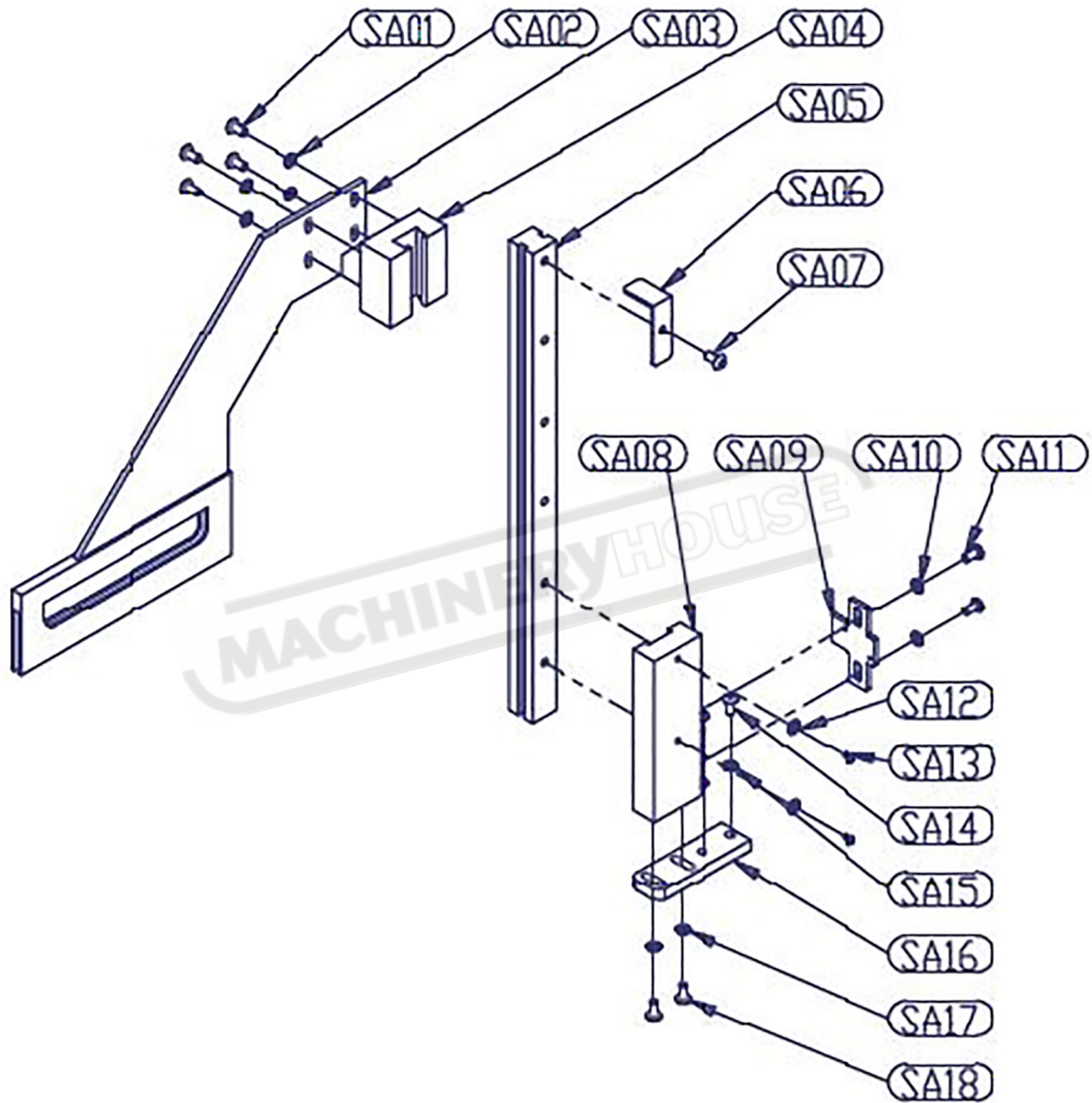
**SAW BOW ASSEMBLY DRAWING-1**



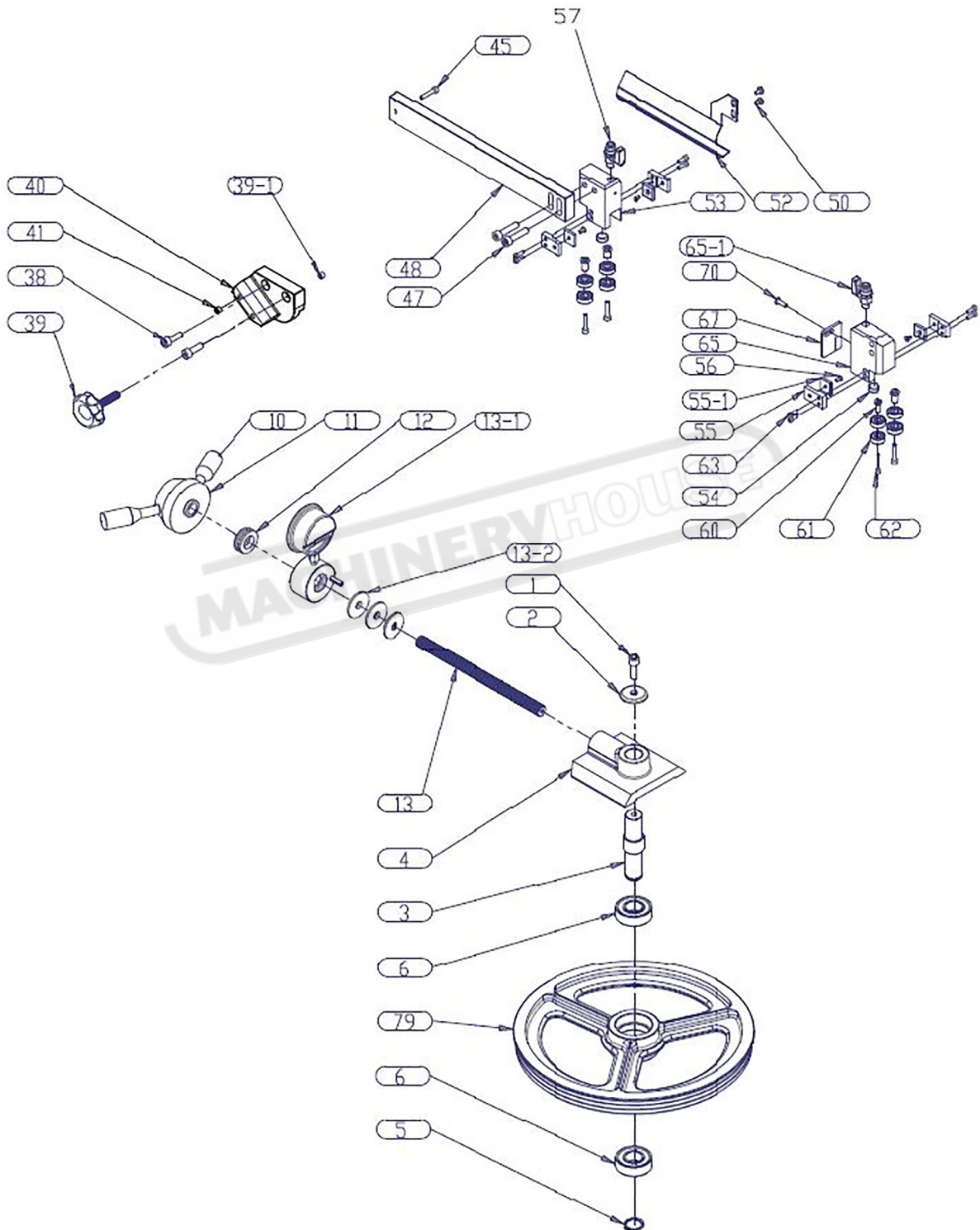
**SAW BOW ASSEMBLY DRAWING-2**



**SAW BOW ASSEMBLY DRAWING-3**

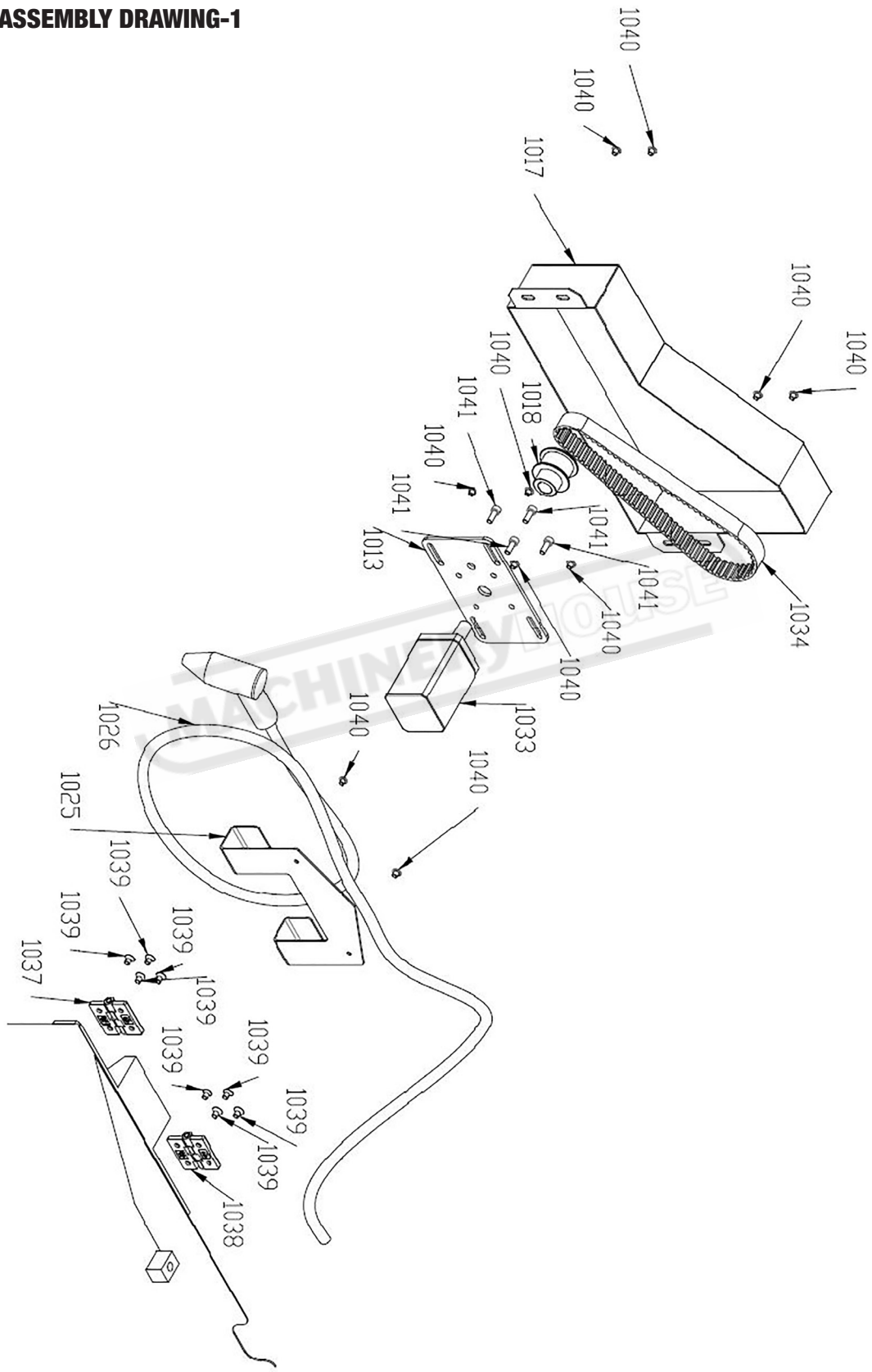


**SAW BOW ASSEMBLY DRAWING-4**

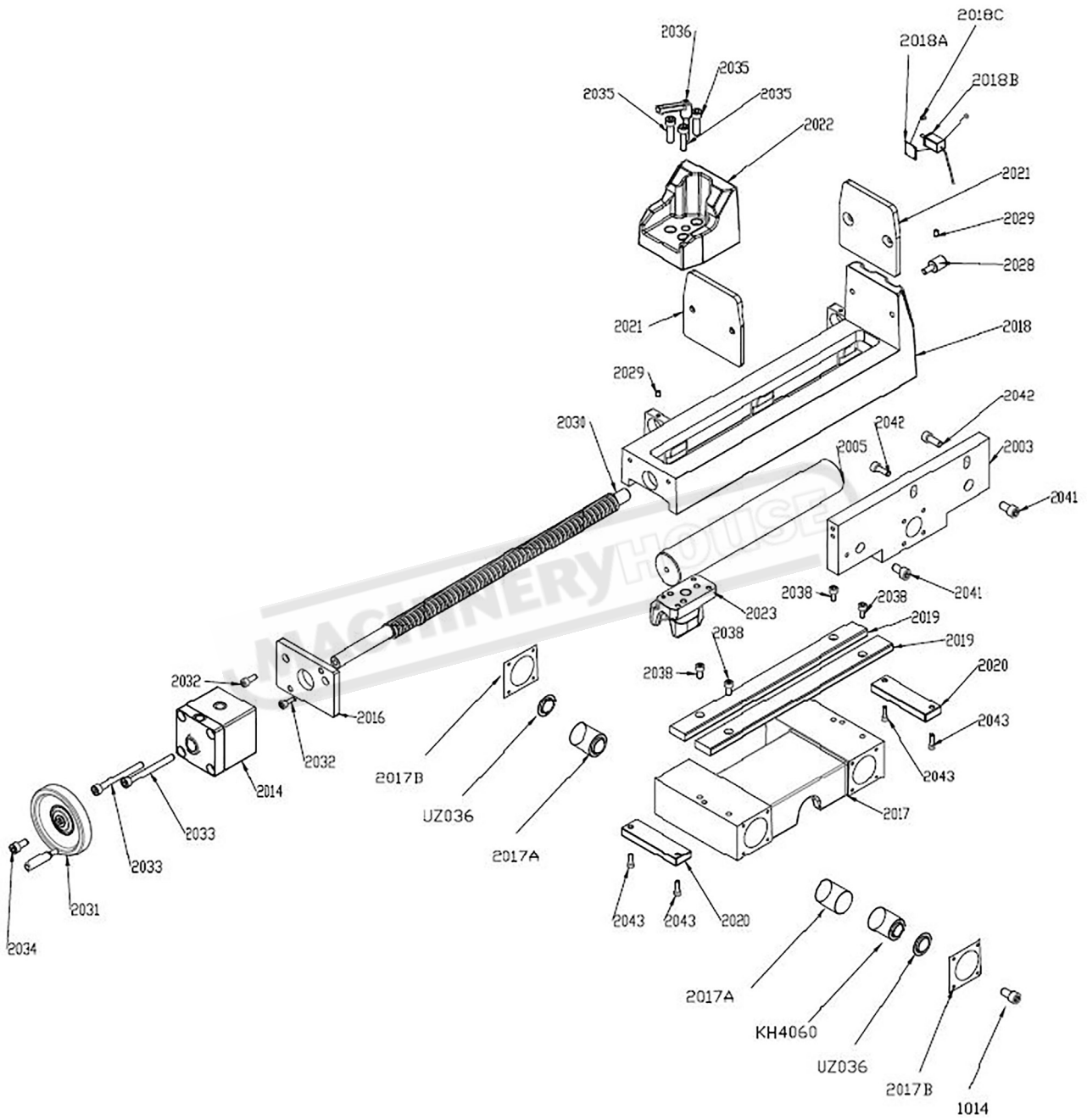




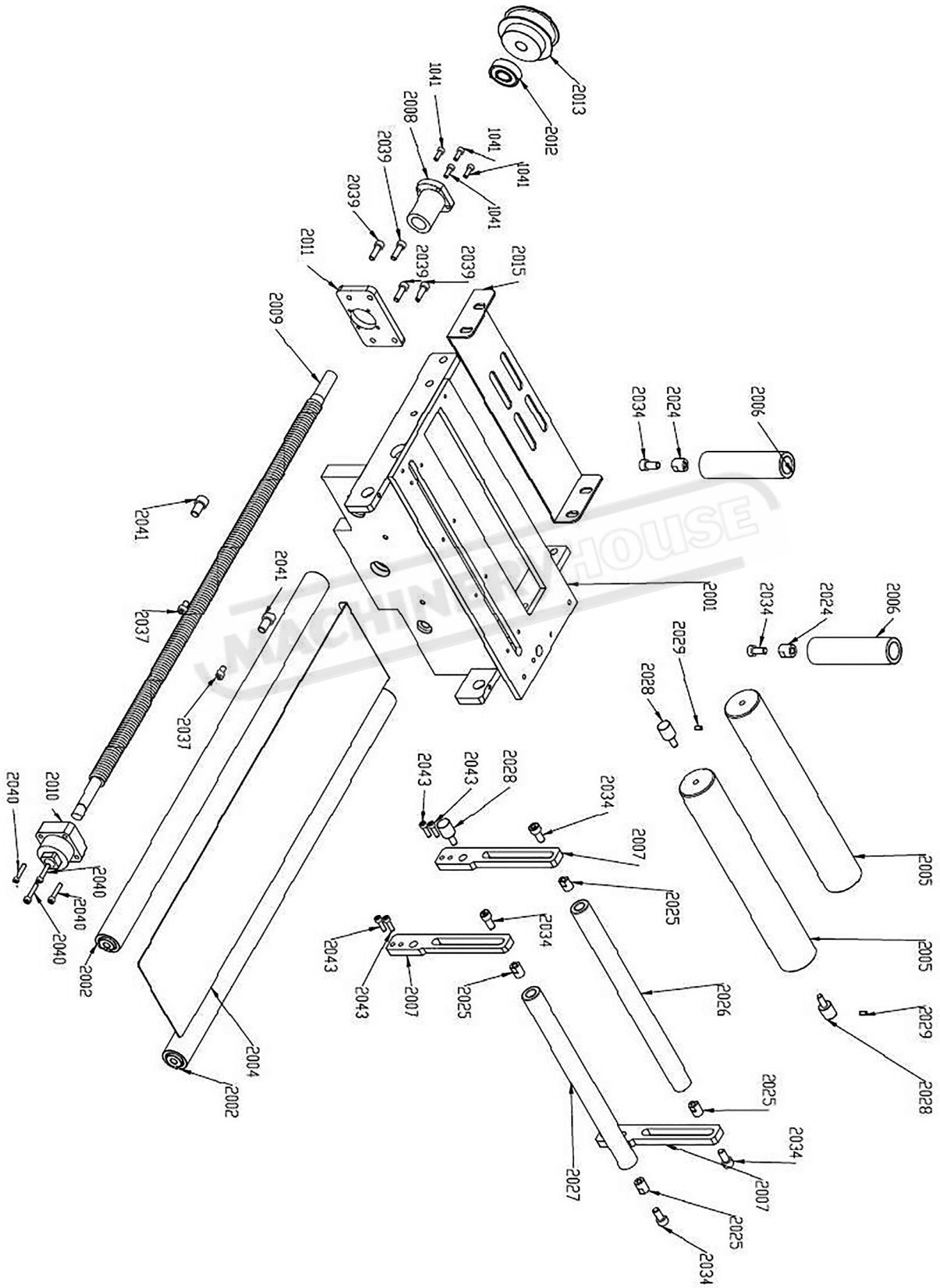
**BASE ASSEMBLY DRAWING-1**



**BASE ASSEMBLY DRAWING-2**

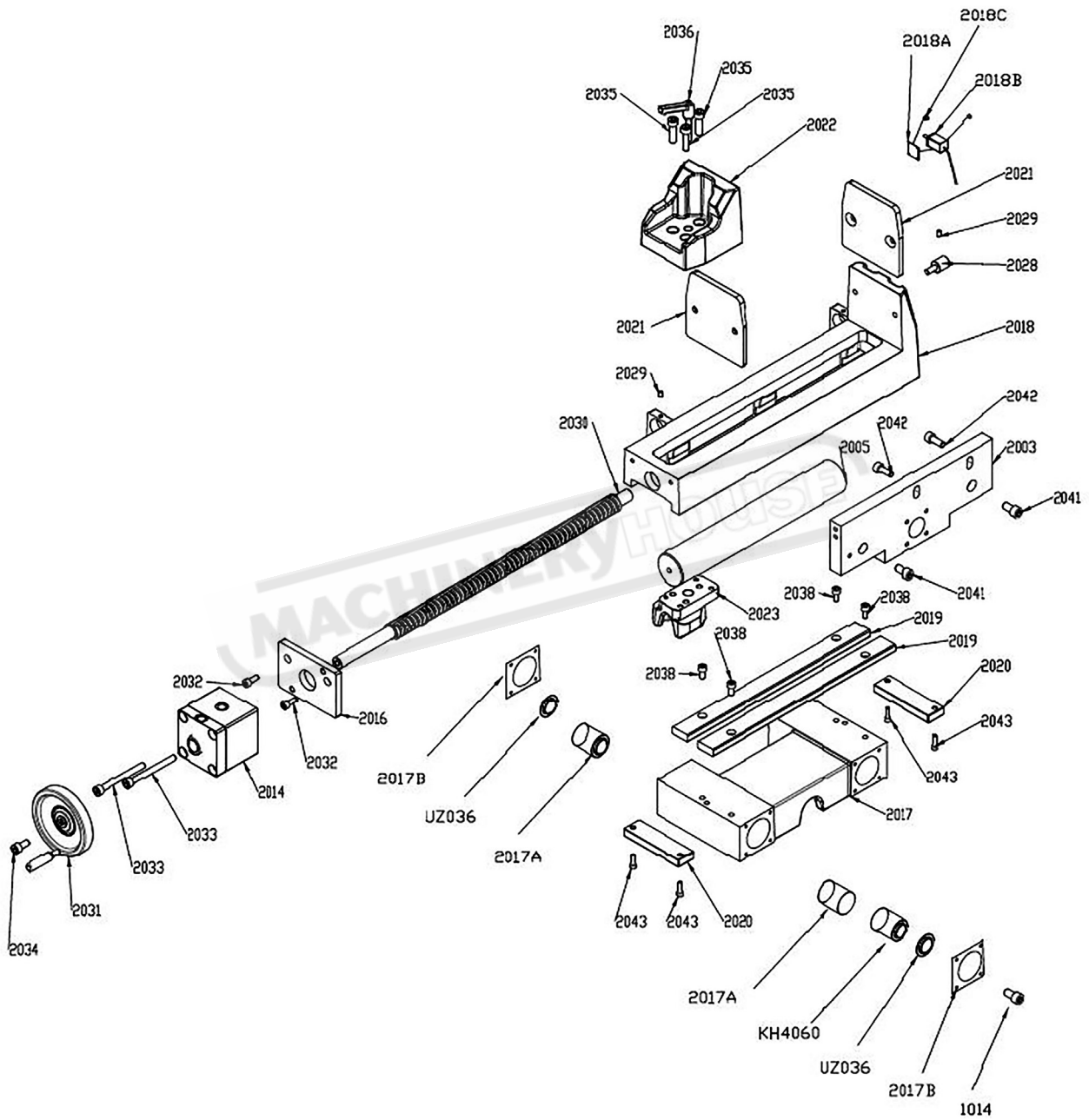


**BASE ASSEMBLY DRAWING-3**

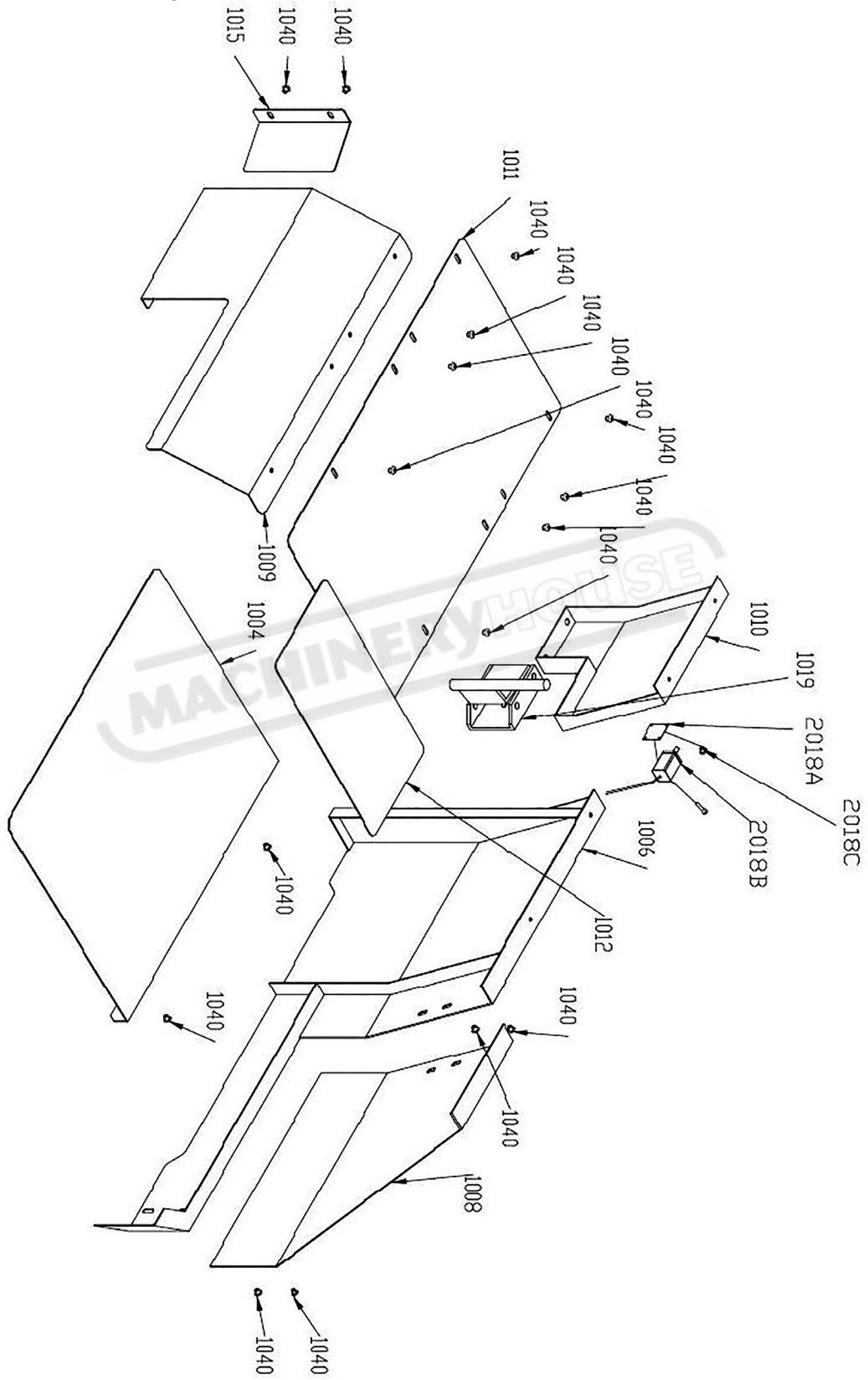




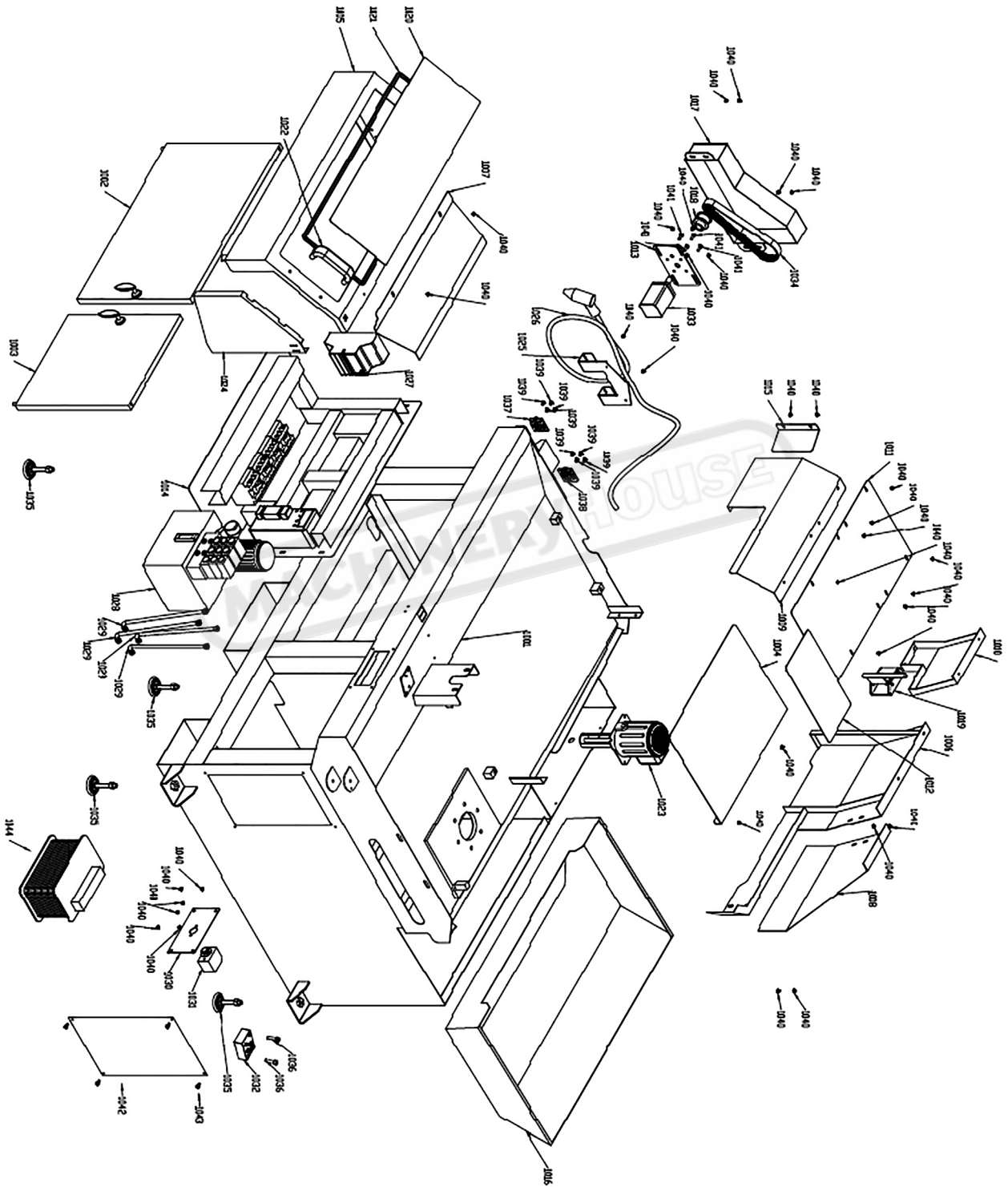
**BASE ASSEMBLY DRAWING-4**



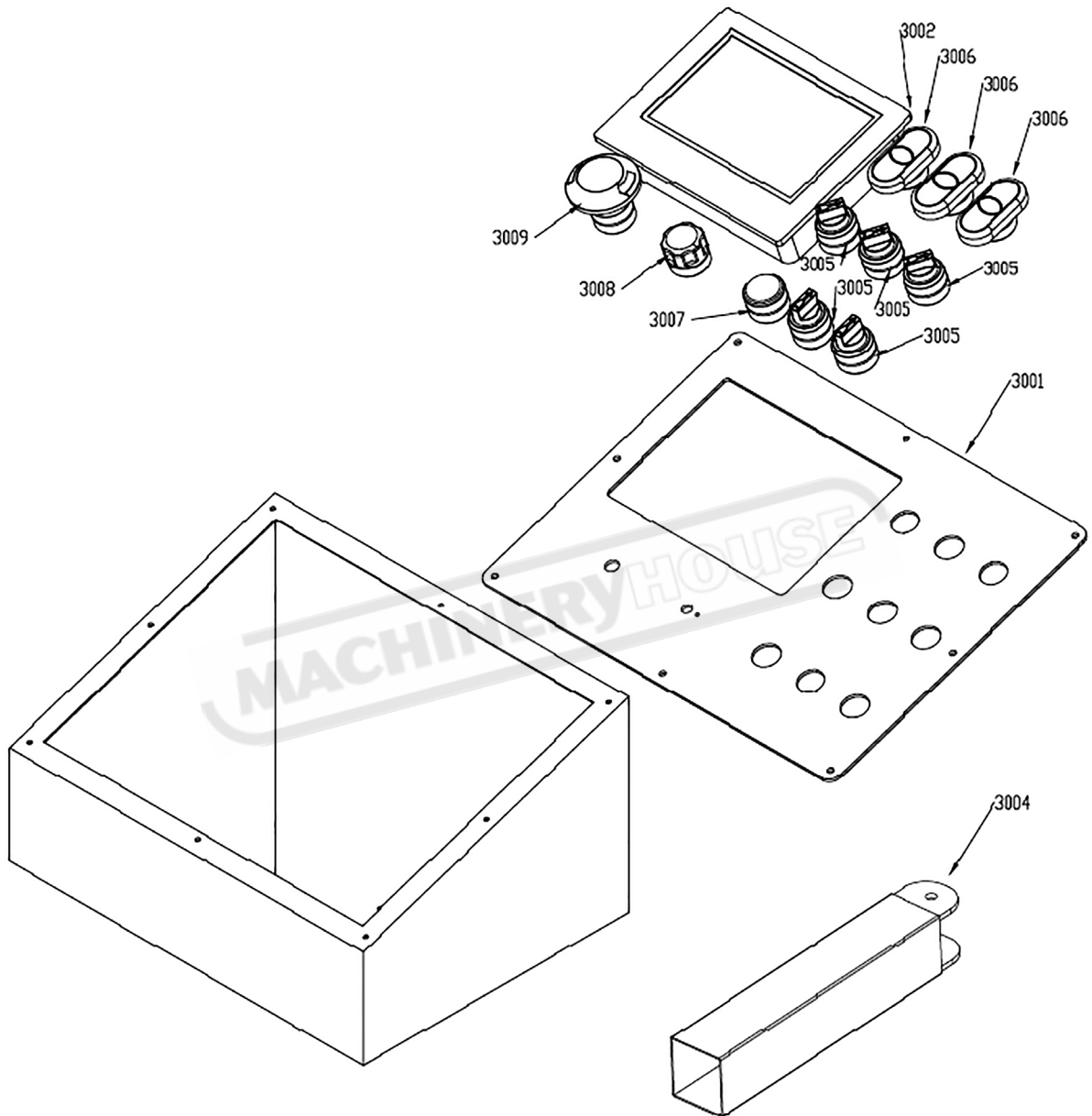
**BASE ASSEMBLY DRAWING-4**



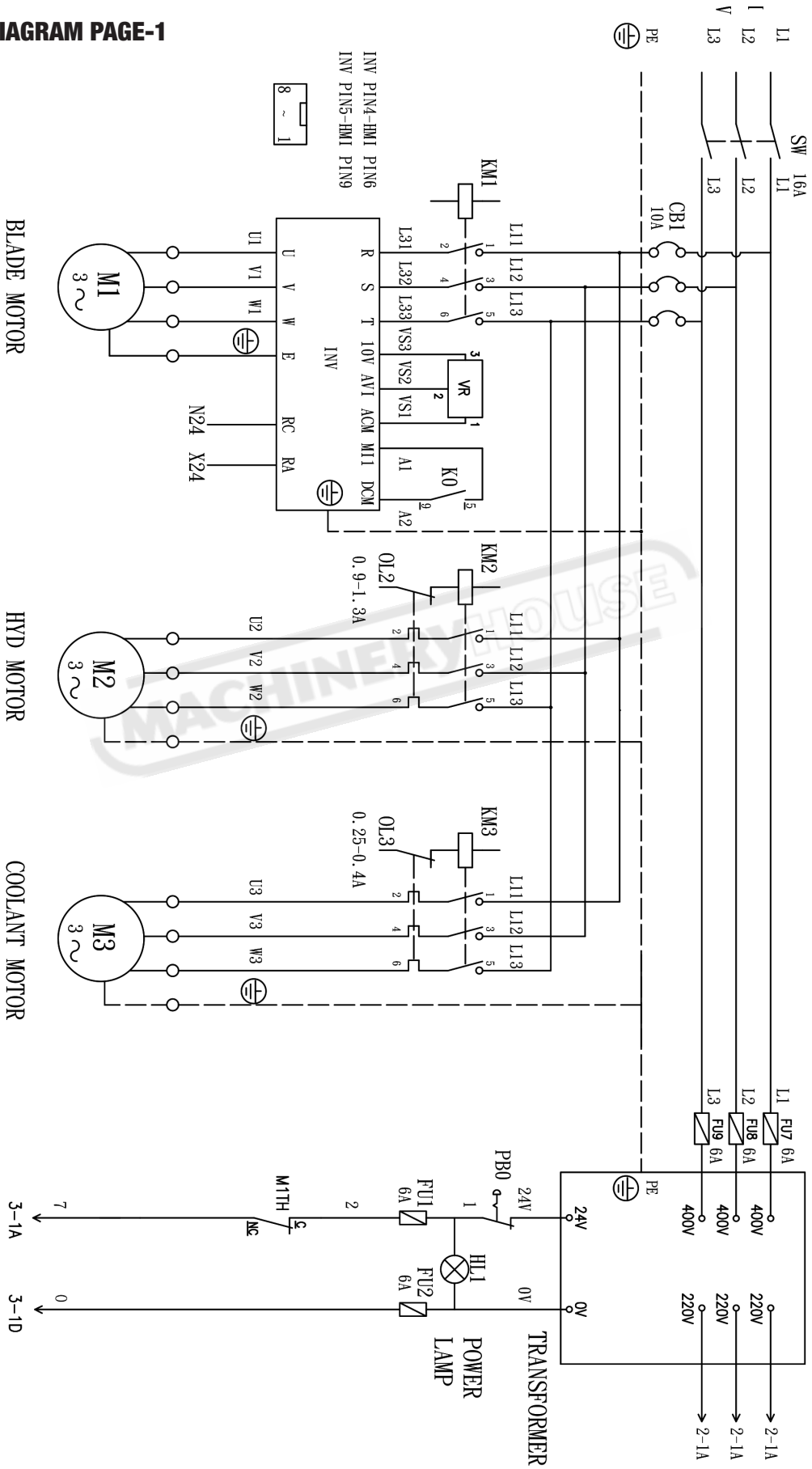
**BASE ASSEMBLY DRAWING-5**



**ELECTRICAL BOX ASSEMBLY DRAWING-1**

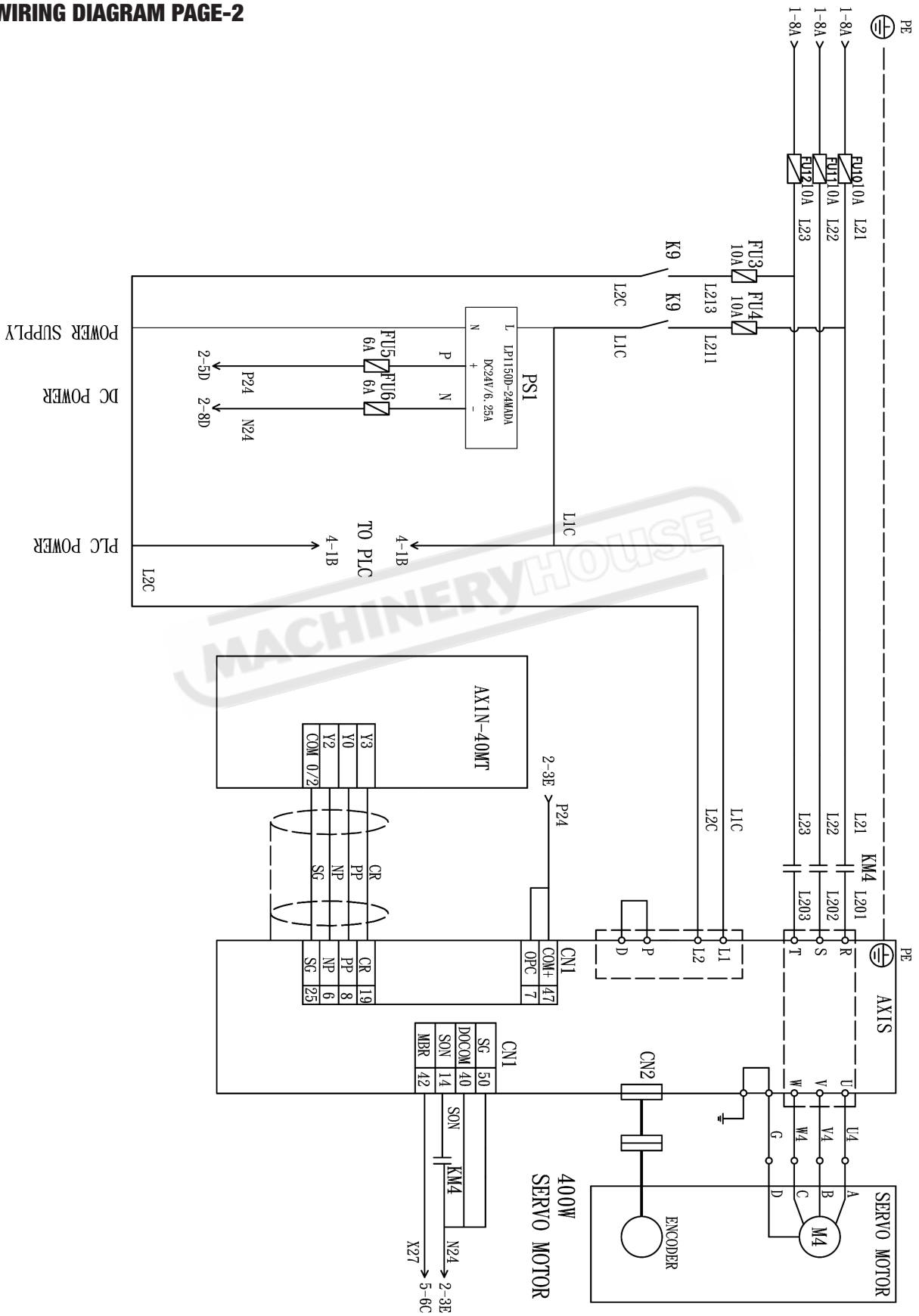


**WIRING DIAGRAM PAGE-1**

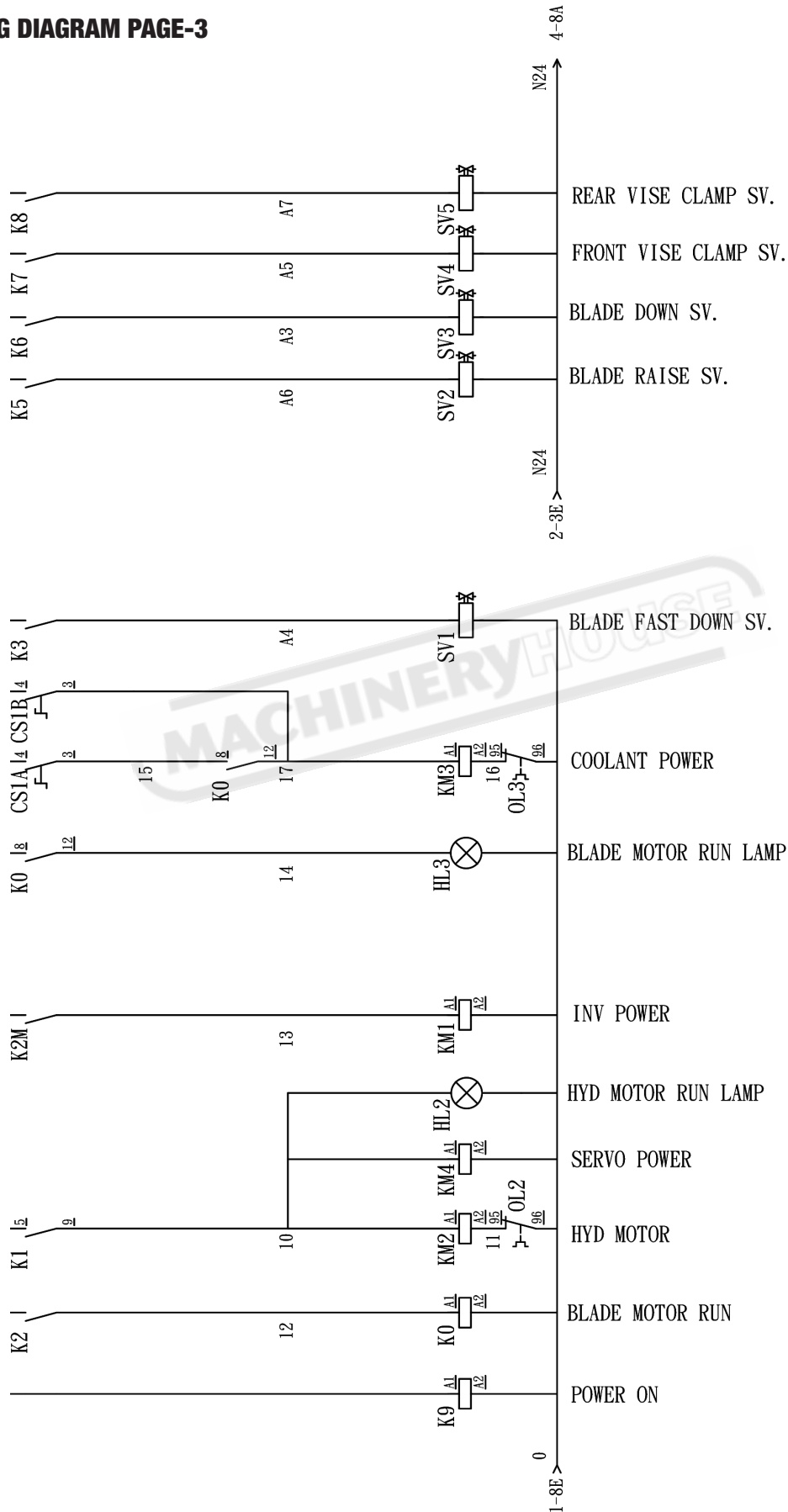




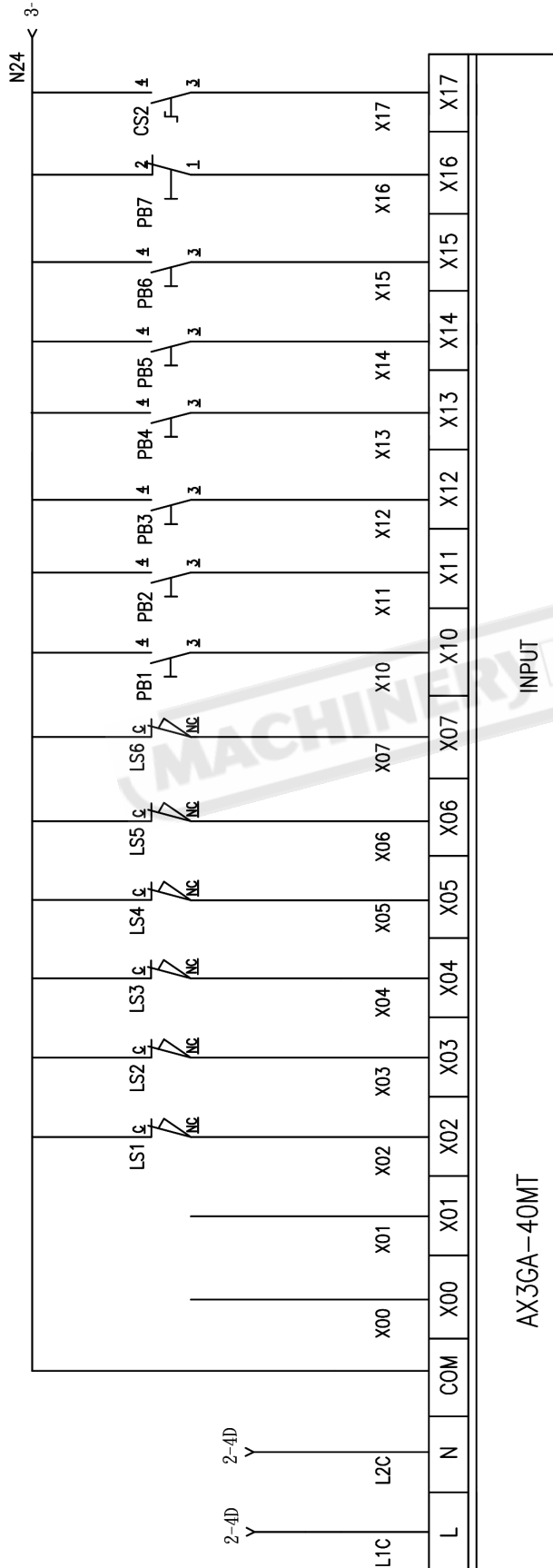
**WIRING DIAGRAM PAGE-2**



**WIRING DIAGRAM PAGE-3**



**WIRING DIAGRAM PAGE-4**



FRONT VISE CLOSE CS.

HYD MOTOR STOP PB.

BLADE DOWN PB.

BLADE RAISE PB.

FEEDING BACKWARD PB.

FEEDING FORWARD PB.

BLADE MOTOR RUN PB.

HYD MOTOR RUN PB.

BLADE UP SE.

WISE NO MATERIAL LS.

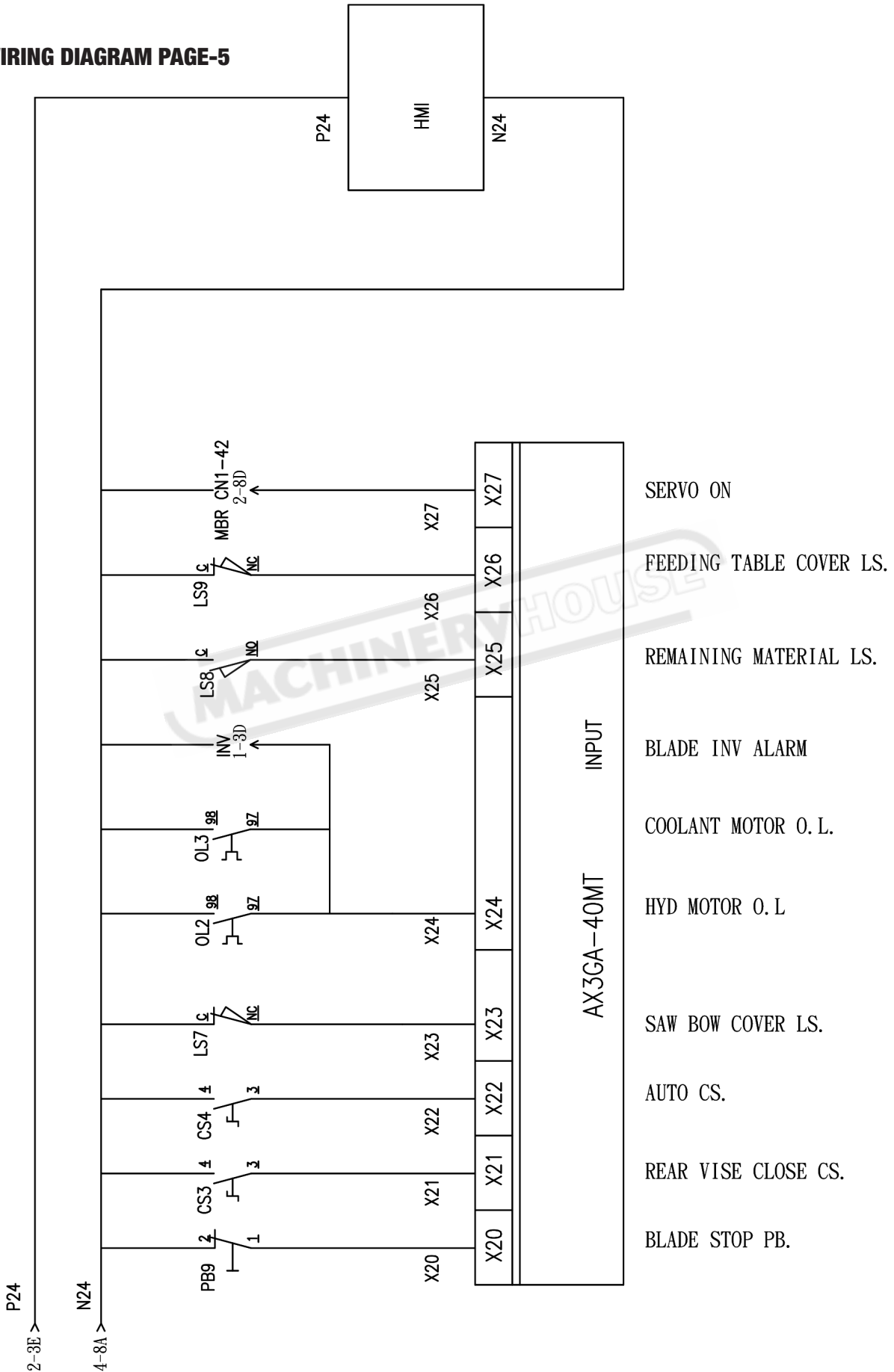
FEEDING BACKWARD LS.

FEEDING FORWARD LS.

BLADE DOWN SE.

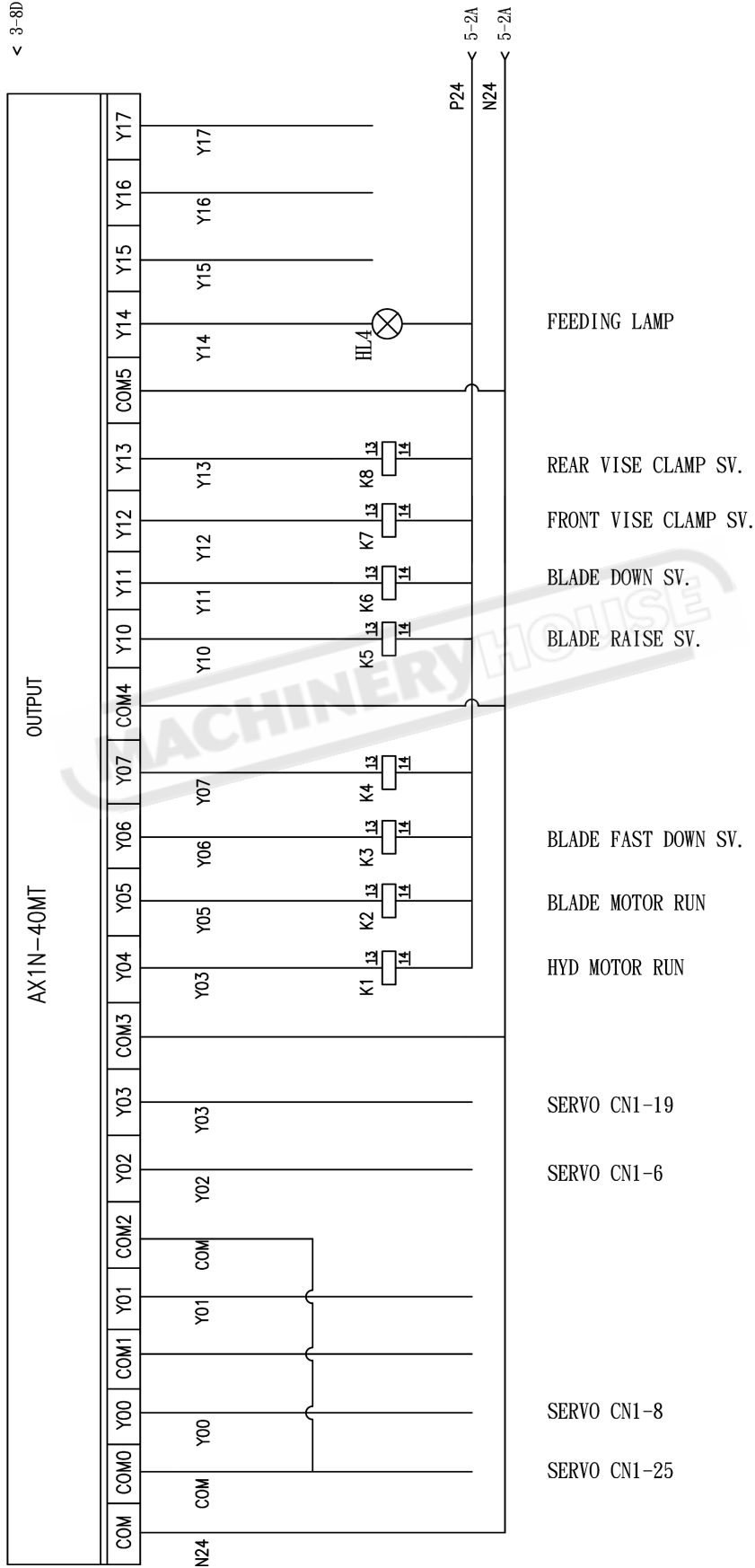
BLADE MOTION DTECTOR PRS.

**WIRING DIAGRAM PAGE-5**



**WIRING DIAGRAM PAGE-6**

< 3-8D





## WIRING DIAGRAM PARTS

Reference	Model No.	Description
K1M	TECO CU-11-AC24V	ith-25A U690V 400V5.5KW CE
K2M	TECO CU-11-AC24V	ith-25A U690V 400V5.5KW CE
X24(F12)	TECO RHU-10K 1.3A	SETTING RANGE1.3A CE
K3M	TECO CU-11-AC24V	ith-25A U690V 400V5.5KW CE
X24-1(F13)	TECO RHU-10K 0.4A	SETTING RANGE 0.4A CE
K4M	TECO CU-11-AC24V	ith-25A U690V 400V5.5KW CE
KM1	MY4NJ-14A	50/60Hz 5A240VAC 30VDC CE
KM2(KO)	MY4NJ-14A	50/60Hz 5A240VAC 30VDC CE
AXIS	Shihlin SDA-040A2	AC230V3PH 50/60Hz 1.9A CE
SERVO MOTOR(M5)	Shihlin SMA-L040R30ACK	AC230V3PH 50/60Hz CE
INV	DELTD VFD007EL43A	3PH 380-480V 50/60Hz3.2A CE
PSI	REIGNPOWER LP1150D-24MADA	100/240VAC 3.0AMAX 50/60Hz CE
TC1	LCE BSK-010 2.1KVA	400V/230V 5A /24V 4A CE
X02	Micro Switch Zippy	20.5A 125/250 V
X03	C.T CT-CLS-101	10(4) A125V-6(2)A250V IP64 CE
X04	Sesors XCMD2502L3	UI(V)AC400 In(A)6 IP66 CE
X05	Sesors XCMD2502L3	UI(V)AC400 In(A)6 IP66 CE
X06	Sesors XCMD2502L3	UI(V)AC400 In(A)6 IP66 CE
X07	OMRON D2VW-5LIB-1M	5A 125 250V AC CE
X10	MOUJE M22DP-SF11E30GR	10A 300VAC 1A 250VDC CE
X16	MOUJE M22DP-SF11E30GR	10A 300VAC 1A 250VDC CE
HL2	MOUJE M22DP-SF11E30GR	12-30V 5-14mA 50-60Hz CE
X11	MOUJE M22DP-SF11E30GR	10A 300VAC 1A 250VDC CE
X20	MOUJE M22DP-SF11E30GR	10A 300VAC 1A 250VDC CE

**NOTE: SOME INDIVIDUAL PARTS MAY ONLY BE AVAILABLE AS AN ASSEMBLY**

**WIRING DIAGRAM PARTS**

Reference	Model No.	Description
HL3	MOUJE M22DP-SF11E30GR	12-30V 5-14mA 50-60Hz CE
PB0	AB-800FPMT44+ALP+X01	AC-15 DC-13 A600 CE
X12	MOUJE M22DP-SF11EWB	10A 300VAC 1A 250VDC CE
X13	MOUJE M22DP-SF11EWB	10A 300VAC 1A 250VDC CE
HL4	MOUJE M22DP-SF11EWB	12-30V 5-14mA 50-60Hz CE
X14	AB-800FPSB32+ALP+X012	AC-15 DC-13 A600 CE
X15	AB-800FPSB32+ALP+X012	AC-15 DC-13 A600 CE
X17	AB-800FPSM22+ALP+X01	AC-15 DC-13 A600 CE
X21	AB-800FPSM22+ALP+X01	AC-15 DC-13 A600 CE
X22	AB-800FPSM22+ALP+X01	AC-15 DC-13 A600 CE
PB1	KEDU QKS8	AC-15 8-14A 250V-400V CE
PB2	KEDU QKS8	AC-15 8-14A 250V-400V CE
X23	KEDU QKS8	AC-15 8-14A 250V-400V CE
X25	Sesors XCMD2502L3	Ui(V)AC400 In(A)6 IP66 CE
K3	SB256	24V AC 22VA Class H CE
K6	pu yuan	DFB-02-3C4-DC24-35C CE
K5-	pu yuan	DFB-02-3C4-DC24-35C CE
K7-(SV4/A5)	pu yuan	DFB-02-2B3-BC24-35C CE
K8-(SV5/A7)	pu yuan	DFB-02-2B3-BC24-35C CE
M2	pu yuan	M1/2H4-500-1A-SP-400V 50Hz CE
HLO	KEYON KE-220DS	
NBF	Shihlin Electric BHA 33 C10	Ui(V)AC690 In(A)10
	KEMA KEUR A105/6(1615)	16A 600V AC 3PH CE
AXIN-40NT	Shihlin AX 1N-40MT	AC85-264V 50/60Hz 32WMAX CE
	MT8071iE	350mA 24VDC CE
K1-K8	bore G2R-OR08-SP 24VDC	16A AC250V/DC30V 50/60Hz

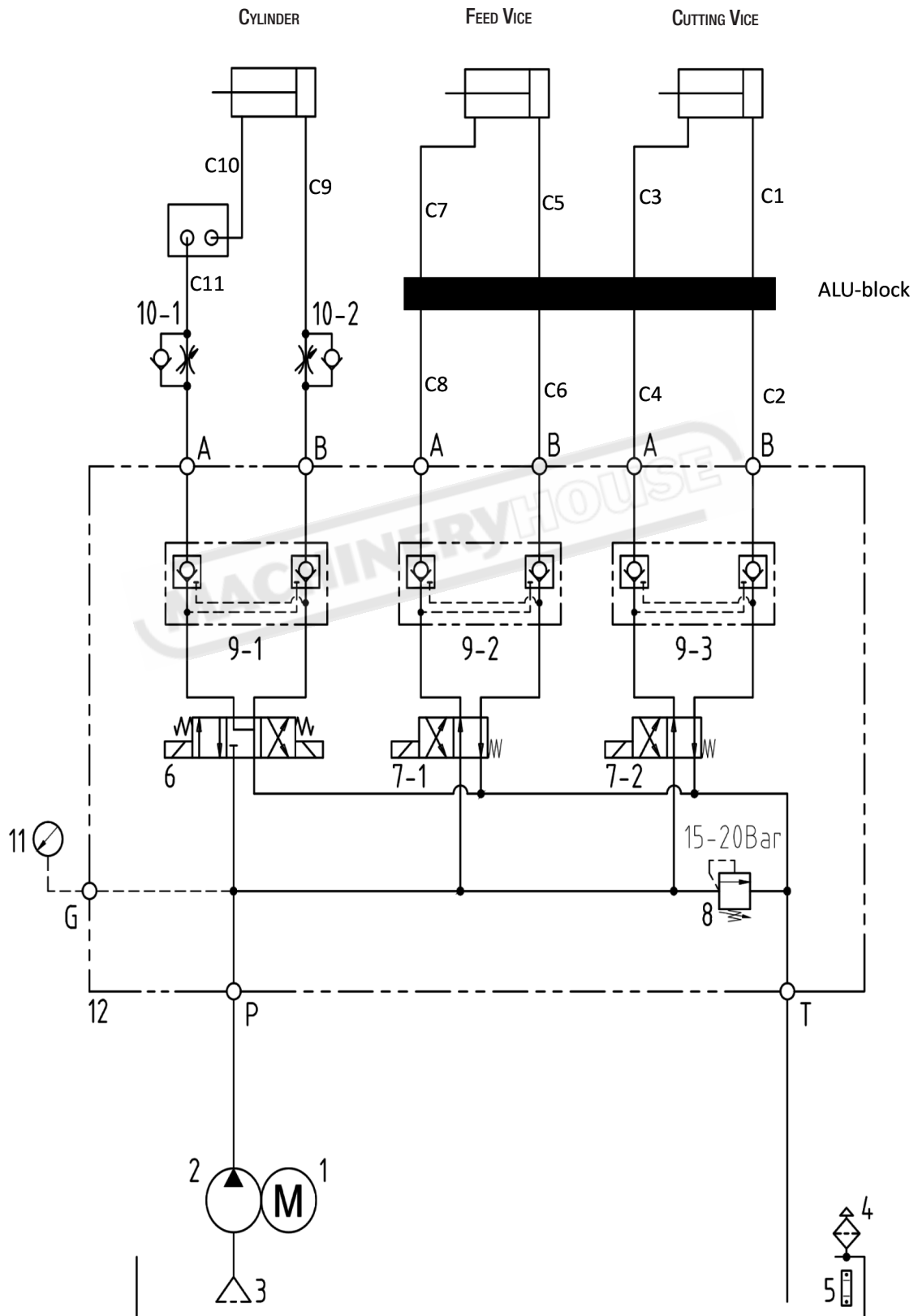
**NOTE: SOME INDIVIDUAL PARTS MAY ONLY BE AVAILABLE AS AN ASSEMBLY**

**HYDRAULIC SYSTEM PARTS LIST**

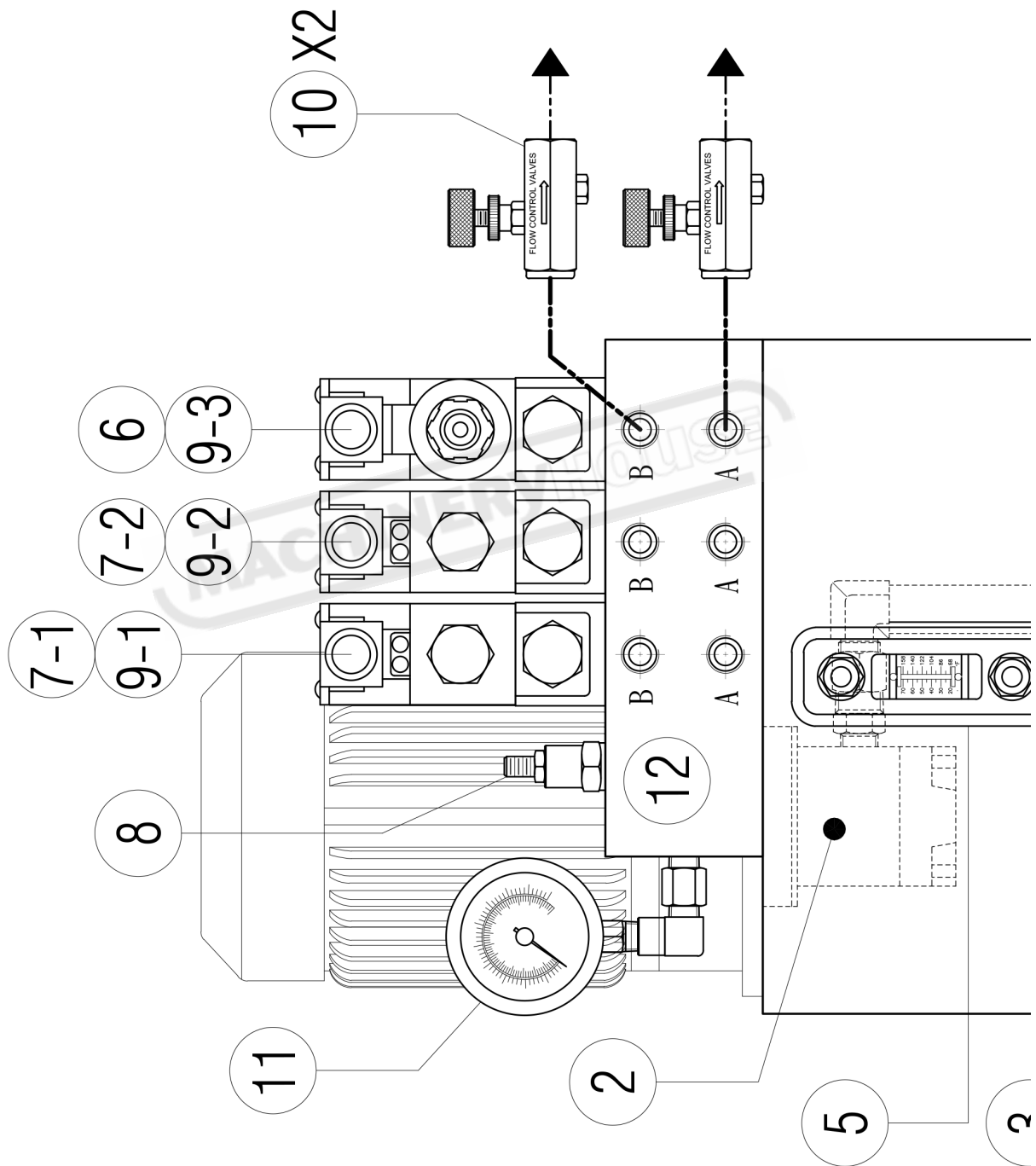
<b>EB-330FAS HYDRAULIC SYSTEM</b>				
<b>No.</b>	<b>PART</b>	<b>ITEMS</b>	<b>QTY.</b>	<b>NOTE.</b>
1	motor	M1/2H4-500-1A-SP(200/400)	1	400V
2	pump	HGP-1A-F5R-Ø12	1	HYDROMAX
3	oil strainer	SFF-04-J	1	JUNWELL
4	oil in	FB-06S-J	1	JUNWELL
5	fluid level gage	LS-3RL-J	1	JUNWELL
6	magematic valve	DFB-02-3C4-DC24-35C	1	DOFLUID
7	magematic valve	DFB-02-2B3-DC24-36C	2	DOFLUID
8	pressure adjust valve	CMR-082-L20N	1	DROTROL
9	Check valve	MPC-02-W	3	TACHENG
10	Throttle	TLC-02	2	JUNWELL
11	pressure gauge	SA2-50K-CN1	1	CNI
12	hydraulic manifold block	MMS-023B-CDP/C28	1	PLI
13	system assemble	TKY1/2H-16A-S	1	PLI

**NOTE: SOME INDIVIDUAL PARTS MAY ONLY BE AVAILABLE AS AN ASSEMBLY**

**HYDRAULIC SYSTEM DIAGRAM 1**



**HYDRAULIC SYSTEM DIAGRAM 2**





**HYDRAULIC SYSTEM DIAGRAM 3**

